

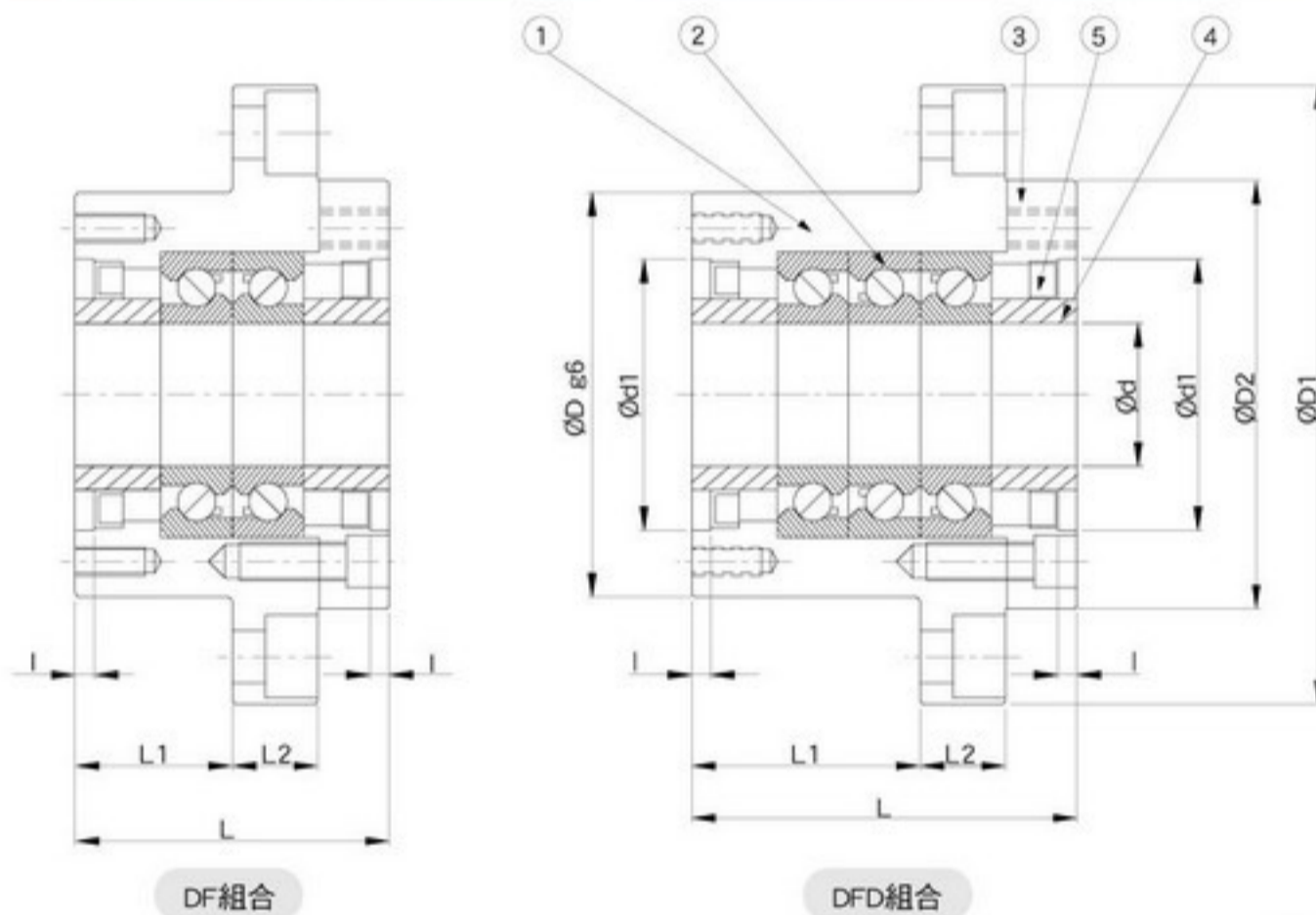


WBK型高荷重支撐座

WBK type support Unit
(heavy-load)

編號/Part No.	部品名稱/Part name	數量/Qty
1	軸承座本體/Housing	1
2	軸承/Bearing	1組/1 set
3	壓板/Holding lid	1
4	間隔圈/Collar	2
5	軸封/Seal	2
6	鎖固螺帽/Lock nut	1組/1 set
7	內六角止付螺絲附鋼片 Hexagon socket-head Setscrew(with set piece)	4

WBK



單位/Unit : mm

型號 Model No.	支撐座尺寸 Dimensions of support unit																	
	d	D	D1	D2	L	L1	L2	A	W	X	Y	Z	d1	I	V	P	Q	H
WBK 17DF	17	70	106	72	60	32	15	80	88	9	14	8.5	45	3	58	M5	10	M6
WBK 20DF	20	70	106	72	60	32	15	80	88	9	14	8.5	45	3	58	M5	10	M6
WBK 25DF					66	33												
WBK 25DFD	25	85	130	90	81	48	18	100	110	11	17	11	57	4	70	M6	12	M6
WBK 25DFF					96	48												
WBK 30DF					66	33												
WBK 30DFD	30	85	130	90	81	48	18	100	110	11	17	11	57	4	70	M6	12	M6
WBK 30DFF					96	48												
WBK 35DF					66	33												
WBK 35DFD	35	95	142	102	81	48	18	106	121	11	17	11	69	4	80	M6	12	M6
WBK 35DFF					96	48												
WBK 40DF					66	33												
WBK 40DFD	40	95	142	102	81	48	18	106	121	11	17	11	69	4	80	M6	12	M6
WBK 40DFF					96	48												

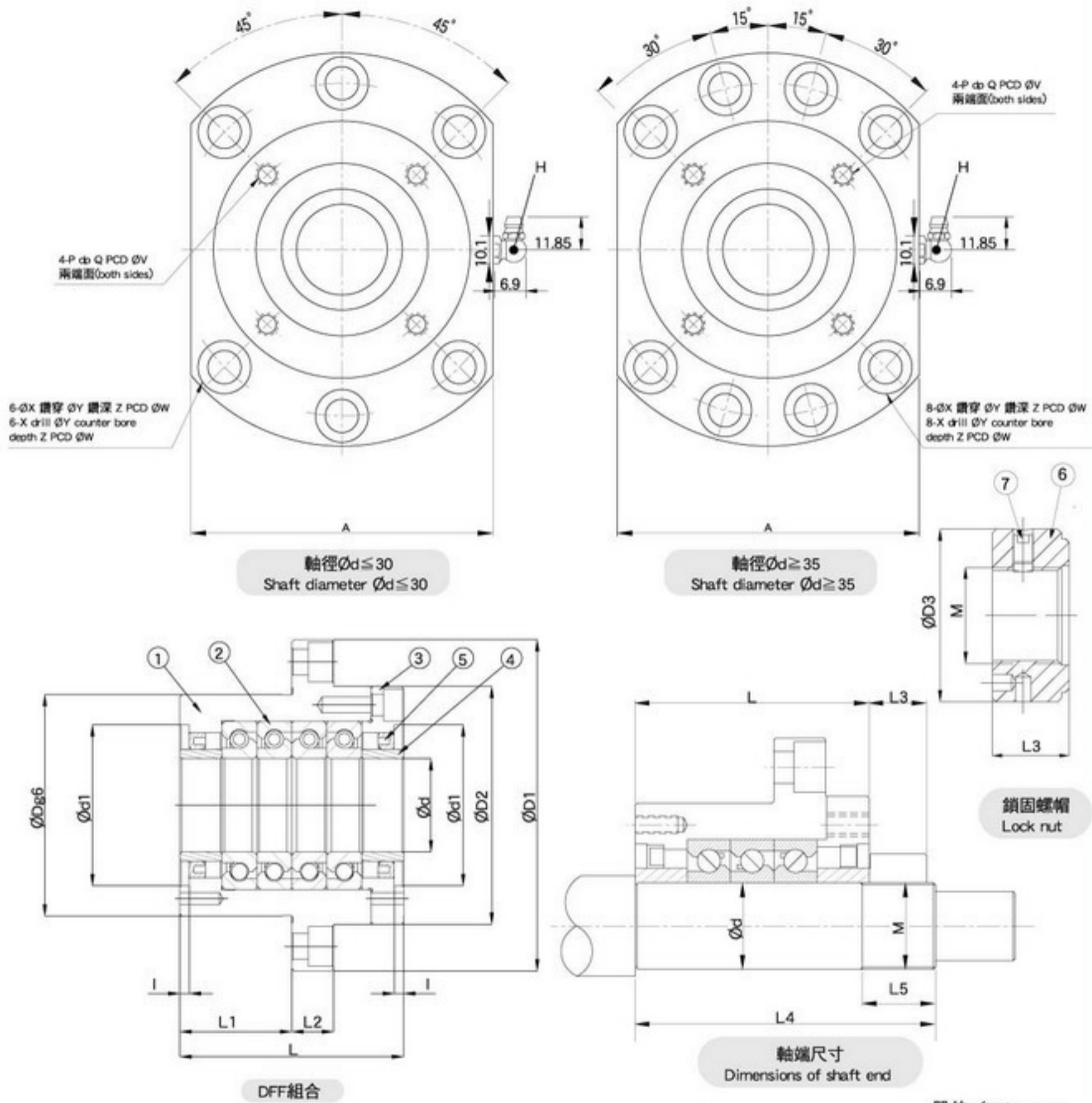
備註 (Note) :

1.軸承採用(P4級)斜角滾珠60°TAC日系品牌大廠。

(Inside bearings use high precision P4 grade TAC 60 degree contact ball bearing.)

2.標準品無油嘴(標示★處)。若有需要請事先告知業務人員。

(The standard type is without Q, if required, please advise in advance.)



單位/Unit : mm

型號 Model No.	基本動定格荷重 Basic dynamic load rating Ca(kgf)	軸向界限荷重 Permissible axial load (kgf)	預壓荷重 Preload (kgf)	軸方向剛性 Axial rigidity (kgf/mm)	啟動力矩 Starting torque (kgf-cm)	鎖固螺帽 Lock nut			重量 Weight Kgs	軸端尺寸 Dimensions of shaft end		
						M	D3	L3		ϕ	L4	L5
WBK 17DF	2240	2710	220	75	1~1.9	M17X1	37	18	1.2	17	81	23
WBK 20DF	2240	2710	220	75	1~1.9	M20X1	40	18	1.2	20	81	23
WBK 25DF	2910	4150	320	100	1.6~2.9	M25X1.5	45	20	2.3	25	104	26
WBK 25DFD	4700	8300	440	150	2.2~4				3.1			
WBK 25DFF	4700	8300	640	200	2.8~5	M30X1.5	50	20	3.4	30	104	26
WBK 30DF	2980	4400	340	105	1.7~3				3.0			
WBK 30DFD	4850	8800	460	155	2.2~4	3.0	30	20	3.3	119	107	30
WBK 30DFF	4850	8800	680	205	2.9~5.2	3.3						
WBK 35DF	3150	5100	390	120	1.9~3.5	M35X1.5	55	22	3.4	35	107	30
WBK 35DFD	5150	10200	530	175	2.5~4.6				3.4			
WBK 35DFF	5150	10200	780	240	3.3~6	M40X1.5	60	22	4.3	40	107	30
WBK 40DF	3250	5300	400	125	2~3.7				3.6			
WBK 40DFD	5250	10600	540	185	2.6~4.8	4.2	22	22	3.6	40	107	30
WBK 40DFF	5250	10600	800	245	3.4~6.2							