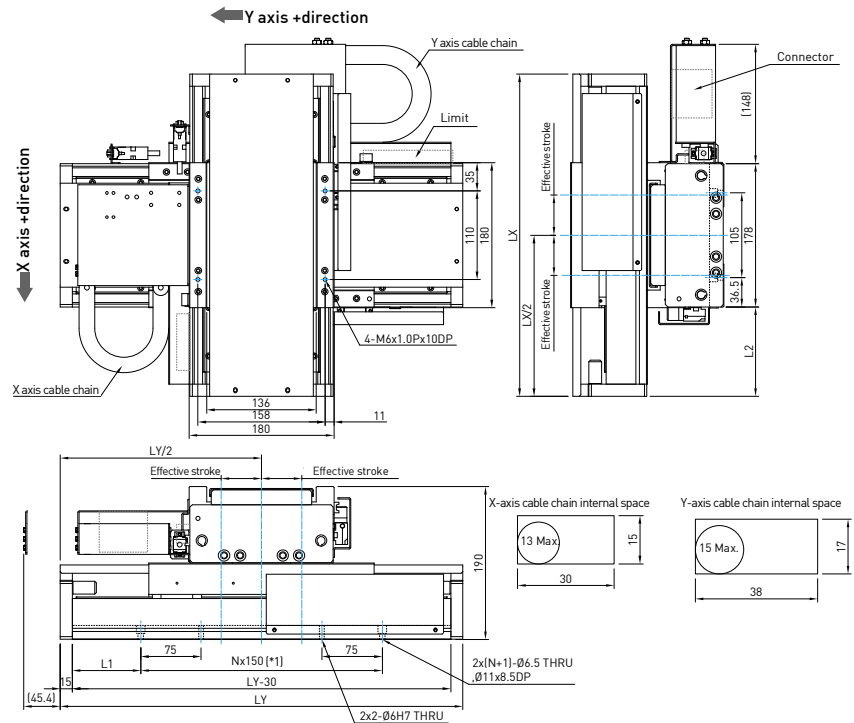


With cover type

Table2-31 With cover X-Y stage product specifications

X-Stroke (mm)	Y-Stroke (mm)	LX (mm)	LY (mm)	L1 (mm)	L2 (mm)	N	Absolute accuracy (μm)	Resolution (μm)	Repeatability (μm)	Orthogonality (arc-sec)	X moving unit mass (Kg)	Y moving unit mass (Kg)	Mass (kg)
100	100	400	500	85	111	1 ¹	±3	1	±1	±5	3	21	46
100	200	400	600	60	111	3	±3		±1	±5	3	21	48
200	200	500	600	60	161	4	±3		±1	±5	3	23	50
100	300	400	700	35	111	5	±3		±1	±5	3	21	50
200	300	500	700	35	161	5	±3		±1	±5	3	23	52
300	300	600	700	35	211	6	±3		±1	±5	3	25	54
100	400	400	800	85	111	7	±3		±1	±5	3	21	52
200	400	500	800	85	161	7	±3		±1	±5	3	23	54
300	400	600	800	85	211	8	±3		±1	±5	3	25	56

* 1: When the stroke is 100mm, the mounting holes spacing is 300mm.
 * 2: Absolute accuracy is after error mapping (with HIWIN drive).
 * 3: Except resolution magnetic scale.
 * 4: For higher resolution, please contact HIWIN MIKROSYSTEM.

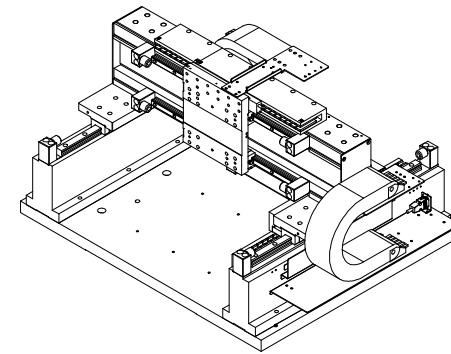


2.6 Gantry Stage

LMG2A series standardized gantry system is a unilateral drive system. LMG2A-C applies to ironless linear motor, and LMG2A-S applies to iron core linear motor.

2.6.1 Gantry stage LMG2A-CB6-CC8

- High acceleration
- No cogging
- Low inertia
- Easy to assemble
- High stiffness aluminum gantry structure
- Equipped with ironless linear motor
- Optical detection application



2.6.2 Gantry stage

LMG2A-CB6-CC8-300-400-G200

Stage type

LMG2A

Upper axis motor type

CB6

Lower axis motor model

CC8

Upper axis stroke

200:200mm 500:500mm
300:300mm 600:600mm
400:400mm

Lower axis stroke

100:100mm 500:500mm
200:200mm 600:600mm
300:300mm
400:400mm

Encoder type

0:none
A:40µm analog 1Vpp optical scale
B:20µm analog 1Vpp optical scale
D:1mm analog 1Vpp magnetic scale
E:TTL digital 1µm resolution magnetic scale
G:TTL digital 1µm resolution optical scale (standard)
H:TTL digital 0.5µm resolution optical scale
K:TTL digital 0.1µm resolution optical scale
M:TTL digital 20nm resolution optical scale
P:40µm glass optical analog scale
X:Other (please remark desired specifications or product model)

Limit switch

0:None
1:Metal cover
2:Optical switch, NPN (standard)
3:Optical switch, PNP
4:Inductive type, NPN
C:Customized

Cover

0:None (standard)
A:Metal cover
B:Bellows
B:Customized
D:Non-woven

Cable chain

0:None (standard)
1:Horizontal direction (chain internal space 15x30mm)
2:Vertical direction (chain internal space 15x30mm)
C:Customized

Note : Contact HIWIN for customized specification.

Table2-31 Gantry stage LMG2A product specifications

X-Stroke (mm)	Y-Stroke (mm)	W (mm)	W1 (mm)	W2 (mm)	W3 (mm)	N	L (mm)	L1 (mm)	Absolute accuracy (µm)	Resolution (µm)	Repeatability (µm)	Orthogonality (arc-sec)	X moving unit mass (Kg)	Y moving unit mass (Kg)	Mass (kg)
200	200	740	440	817	110	2	600	100	±9	1µm	±3	±5	5	31	50
300	300	840	540	917	135	3	700	50	±9		±3	±5	5	35	52
400	400	940	640	1017	160	3	800	100	±12		±4	±5	5	39	54
500	500	1040	740	1117	185	4	900	50	±12		±4	±5	5	43	54
600	600	1140	840	1217	210	4	1000	100	±12		±4	±5	5	47	56

- * 1: Absolute accuracy is after error mapping (with HIWIN drive).
- * 2: Except resolution magnetic scale.
- * 3: For higher resolution, please contact HIWIN MIKROSYSTEM.

